



WE LOVE LORNE

Lorne offers a bay of riches filled with space to reconnect, leaving all who visit with a sense of fulfilling their own holiday rituals. You'll feel reinvigorated and love Lorne too.

THINGS TO SEE & DO

Relax on the beach or go swimming. Lorne's Main beach is patrolled during the summer season.

Play a round of golf while admiring the sweeping ocean views in a bush setting.

Have some family fun on the foreshore with the playground, trampolines, swimming pool, mini golf and skate park.

Great Ocean Road

Take your time to travel the Great Ocean Road and discover some of the most spectacular scenery, waterfall walks and resort towns in Australia.

Enjoy a picnic overlooking Loutit Bay or head to the bush at Blanket Leaf or Sheoak picnic grounds.

Enjoy a movie at the historic Lorne Theatre which offers the latest films during peak time and school holidays.

SHOPPING & DINING

Mountjoy Parade

Stroll along Mountjoy Parade and browse the various boutique clothing, specialist shops, galleries and cafés.



TOP FOUR WALKS IN LORNE

Teddy's Lookout

Enjoy the breathtaking views from Teddy's Lookout. It offers one of the best views of the Great Ocean Road. Start/Finish: Rotunda at the end of George Street with a 300m walk to Teddy's Lookout.

Erskine Falls

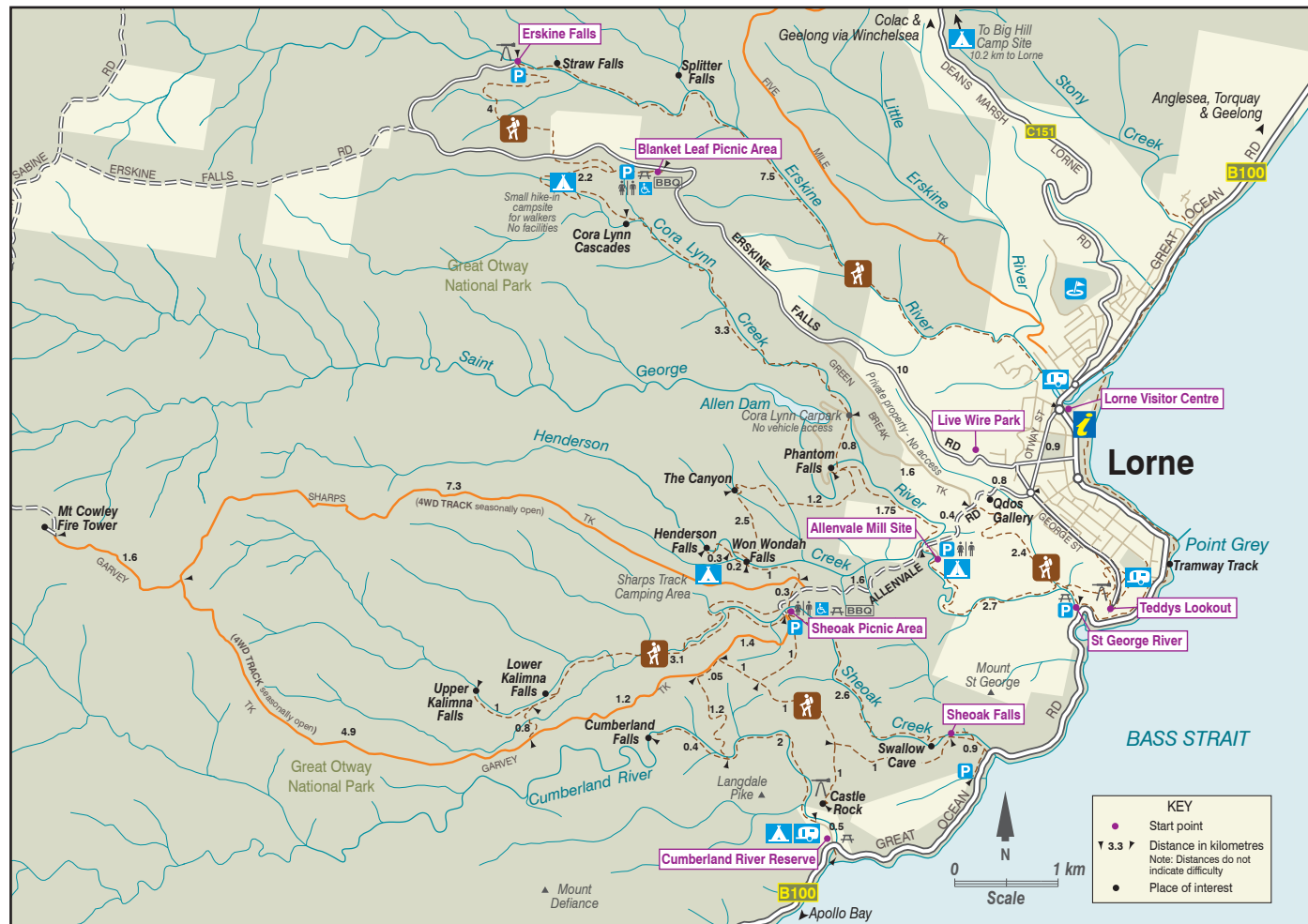
One of the most popular falls in the Otways, drops 30m into the fern lined valley of the Erskine River. It is an easy walk (300m) to the first lookout over the falls, with more spectacular views from the second lookout (700m and some steep steps) further down. Start/Finish: is at the Erskine Falls Car Park, 10km from Lorne on the Erskine Falls Road. Follow the signs from the Visitor Centre up Otway Street.

Won Wondah & Henderson Falls

From the Sheoak Picnic Area a gentle track leads to Won Wondah Falls past giant eucalypts to finish in a fern gully in front of the Henderson Falls. Start/Finish: Sheoak Picnic Area

Mountain to Surf Run

Every year in January, the Mountain to Surf Run is on. The track starts in Otway Street to the roundabout then down Allenvale Road to the Mill site, through the forest to the coast along St George River to the Tramway Track and Lorne Foreshore Start training! Start/ Finish: Otway Street, Lorne in an 8km Circuit.



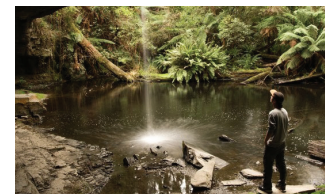
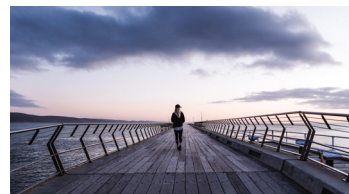
LORNE WALKS & WATERFALLS

Explore the beautiful bush walks around Lorne through the rainforest gullies of the Great Otway National Park which offers more the 50km of walking tracks. For more info pick up a copy of the 'Lorne Walks and Waterfalls Map' from the Lorne VIC.

EMERGENCY NUMBERS:

000: Police, Fire, Ambulance

Bushfire Information Line and Total Fire Ban: **1800 240 667**



For more information, contact the Lorne Visitor Centre on 1300 891 152.

Friendly staff and volunteers will answer your enquiries 7 days per week from 9am to 5pm. The centre also provides public internet, free wifi, a free accommodation referral service and a retail store.

lornevic@surfcoast.vic.gov.au
lovelorne.com.au

15 Mountjoy Pde, Lorne



Access Township Maps are available from Surf Coast Visitor Centres.



LORNE STREET INDEX

- L11
Adderley Ave.
- L16
Albert St.
- L16
Allen St.
- L16
Allenvale Rd.
- L16
Alpha Tce.
- L15
Alsop St.
- L15
Anderson Ct.
- L15
Anderson St.
- L14
Argyle La.
- L12
Armstead St.
- L17
Armytage St.
- L14
Austin Ct.
- L16
Banks St.
- L16
Bay St.
- L16
Beal St.
- L15
Beaurepaire Dr.
- L15
Beil La.
- L15
Belvedere Tce.
- L15
Brownes La.
- L16
Caulfield St.
- L16
Charles St.
- L13
Charby La.
- L14
Clissold St.
- L15
Clovelly Ct.
- L15
Cypress Ave.
- L15
Dalway St.
- L15
Deans Marsh Rd.
- L13
Doble St.
- L11
Dorman St.
- L11
Duncan St.
- L11
Erskine Ave.
- L13
Erskine St.
- L15
Erskine Falls Rd.
- L15
Fern Ave.
- L13
Fernleigh Tce.
- L12
Five Mile Tk.
- L16
Fletcher St.
- L17
Francis St.
- L16
Francis La.
- L13
Gardiner Ave.
- L15
Gay St.
- L16
George St.
- L16
Grand Pde.
- L15
Great Ocean Rd.
- L18, L11
Grove Rd.
- L14, L15
Gwynne St.
- L12
Hall St.
- L16
Harvey St.
- L11
Hazel St.
- L13
Heath St.
- L17
Hird St.
- L12
Holiday Rd.
- L14
Hopetoun Tce.
- L16
Howard St.
- L16
James St.
- L16
Jarrat La.
- L16
John St.
- L13
Lascelles La.
- L13
Lascelles Tce.
- L16
Lorne Ave.
- L13
Lorne Tce.
- L13
Minapre St.
- L15
Moorhouse St.
- L14
Mountjoy Pde.
- L12
Neade St.
- L13
Normanby Tce.
- L15
Otway St.
- L14
Polwarth Rd.
- L13
Richardson Blvd.
- L11
Roache Ct.
- L16
Roadknigh St.
- L16
Romaro St.
- L12
Rooke St.
- L12
Sabine St.
- L16
Seymour St.
- L10
Skyline Ct.
- L16
Smith St.
- L12
Smithers St.
- L13
Staughton Ave.
- L13
Stirling St.
- L11
Summer Hills Ave.
- L14
Toorak Tce.
- L17
Topp St.
- L10
Tradewinds Ave.
- L17
Wallace St.
- L13
Waverley Ave.
- L15
William St.



DISTANCE AND TRAVEL TIMES FROM LORNE

Travel times are a guide only and may vary due to the scenic and winding nature of roads and different weather conditions.
Expect travel times to be longer during peak season. (*Via coast)

Town	Km	Time	Town	Km	Time
Anglesea	30	36mins	Geelong	70	1hr 10mins
Apollo Bay	44	1hr	Kennett River	22	20mins
Avalon Airport	91	1hr 32mins	Melbourne	139	1hrs 57mins
Birregurra	35	35mins	Queenscliff	90	1hr 50mins
Colac	57	60mins	Twelve Apostles	140	2hrs 35mins
			Torquay	47	56mins
			Winchelsea	46	41mins
			Wye River	15	15mins
			Warrnambool*	208	3hrs 25mins